

## Hula Lake Park

### The Stephen J. Harper Visitor and Educational Center

#### Donated by KKL-JNF Friends in Canada

The Hula Lake Nature Eco-Education Park is the flagship project of KKL-JNF in Israel's northern region, where the elements of nature, environmental conservation, eco-tourism, education and research are all integrated in one beautiful site. Thanks to its unique location along one of the major global bird migration flyways, the Hula Valley attracts hundreds of millions of birds every year, particularly the large crane population. At the heart of the Hula site lies the lake that serves as a habitat for birds and other wildlife animals. KKL-JNF has added over the years scenic lookouts, bicycle trails, a botanical garden and acclimation plot for aquatic plants, a bird ringing (banding) station and more for the benefit of the guests and visitors. The attractions at the site are all accessible to people with disabilities as part of KKL-JNF's policy of opening its attractions to all populations in Israel.



The Hula Lake is one of the most popular tourist attractions in northern Israel, and moreover it promotes employment and economic activity in the region. Hundreds of thousands of visitors, from Israel and around the world visit the Hula Valley every year supporting the local economy and promoting tourism.

The construction of the new state-of-the-art visitor and educational center at the Hula Lake Park, which will be named in honor of former Canadian Prime Minister Stephen J. Harper, is now proceeding in full force, thanks to the support of KKL-JNF friends in Canada. The Center will include many unique elements that will allow visitors and tourists to become closely acquainted with KKL-JNF's tremendous project in the Hula Lake and its major contribution to nature, the environment and the millions of migrating birds that visit the Hula Valley every year.

The visitor center will offer various interactive activities and attractions suited to diverse populations of all ages that will tell the story of The Hula Valley, nature and the birds.

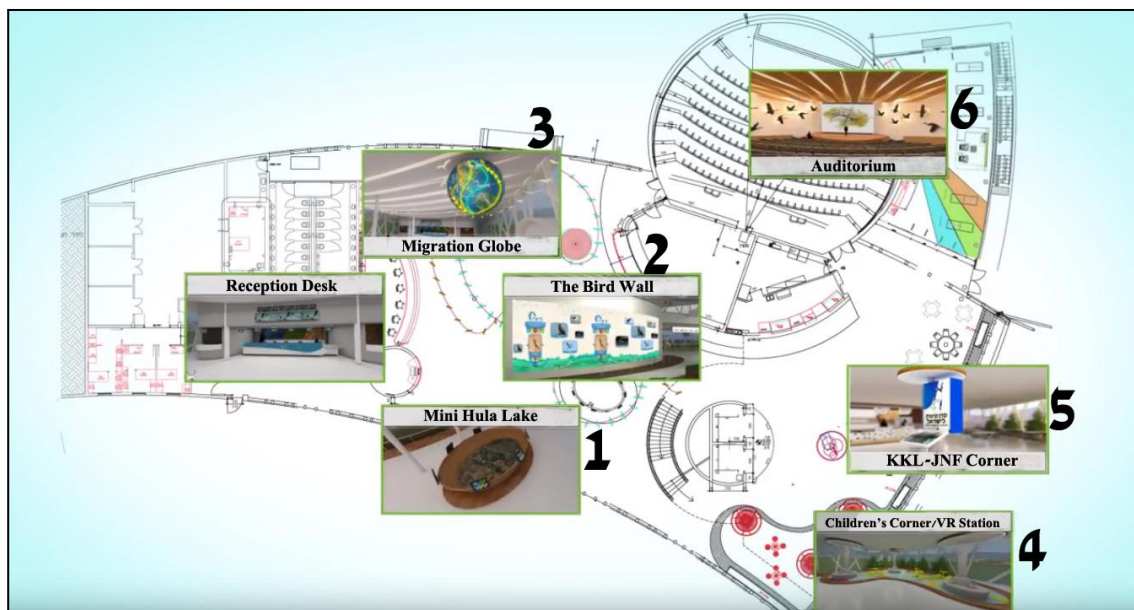


## The Building

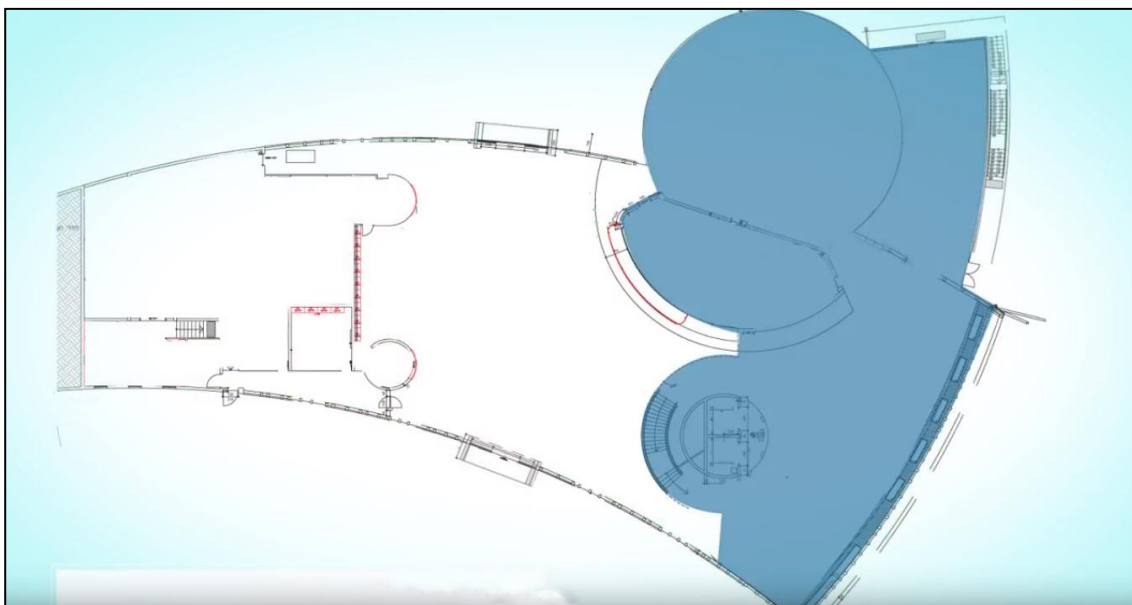
The visitor center is built on two levels: the ground floor, which includes an entrance a foyer and the second level, a gallery.

Most of the elements and exhibits are displayed on the ground floor, while the gallery houses the conference hall.

### Ground Level:



### Upper Level – The Gallery:



## The Unique Elements in the Visitor Center

### Ground Level

#### 1. Mini Hula Lake

A three- dimensional model presenting the Hula Lake as a total living experience focusing on the systems that combine tourism, settlement, agriculture and sustainability in a three-dimensional model that includes the site and its elements as a multimedia kinetic model. The Mini Hula Lake uses multimedia (screening from above and sound effects), dynamic physical elements with special effects that describe KKL-JNF activities in the fields of water (flowing water effect), soil (the drainage and re-flooding of the valley) and forestry.



#### 2. The Bird Wall

The Bird Wall will provide visitors with the feeling of the variety and abundance of birds that arrive at this global birding site, using experiential fun tools and hand movements that create simultaneous interactions for twelve visitors at a time. The dynamics are determined by the movements. An interactive quiz will allow visitors to use functions in the browser on the screen on the wall, to learn about the local vegetation and wildlife, which they will meet outside when they leave the visitor center. A special, 18-square meter glass wall, screened from behind, will allow no-touch interaction using sensor technology that identifies hand movements. The complex includes a projector, computer network and applications.

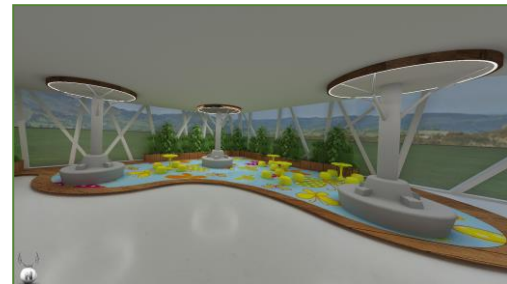
### 3. Migration Globe

This unique globe illustrates the various bird migration routes in the world, with the Syrian-African Rift, where the Hula Lake is located, at its center, and the different bird species visiting the site during the migration seasons. The globe is made of plastic material with a map of the world on which illuminated strips showing global migration routes are overlaid and includes a motor that rotates the globe. The globe is hung from the ceiling by a mechanism that allows it to descend to a height suitable for viewing from up close.



### 4. Children's Corner and VR Station

The play corner will allow infants and young children to rest and play surrounded by the attractions in the center. There will also be a virtual reality (VR) station for young people that will be based on three-dimensional photographic materials to illustrate and provide interactive photographic information on the Hula Lake and the birds visiting it. The play corner furnishings include colorful decorative tables and chairs in soft materials, shaped like flowers and plants to provide sensory stimulation. The corner will be used for creative activities and the floor will be covered with a plastic safety material. The VR station will include special professional VR glasses for viewing photographs and animations three-dimensionally.



### 5. KKL-JNF Corner

This area is intended to present past, present and future KKL-JNF activity throughout Israel and its extensive contribution to the building and development of the State



of Israel since its inception. The various topics covered include forestry, water and soil, using the famous KKL-JNF Blue Box as a visual lead. At this station, there will be a collection of Blue Box replicas and a multimedia system that will present subjects related to KKL-JNF activity. The interactive system includes a computer, computer programs and a touch screen.

## 6. The Lorraine Harper Multifunctional Auditorium

The multifunctional auditorium will seat some 200 people and is equipped with state-of-the-art technology to project three-dimensional and K4 films. It can also be used for conferences, lectures and other types of study days. The design of the auditorium will be modern, comfortable and impressive. Two films, specifically produced for the Hula Lake Visitor Center will be shown at the auditorium:

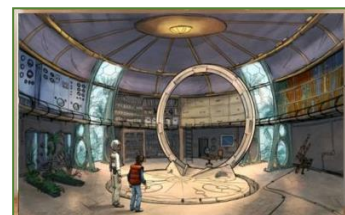


### A. "The Four Seasons"

This 18-minute nature film, relates the story of life in the Hula Lake area and the changes throughout the seasons, sending an educational and marketing message to promote activity at the Lake throughout the year and not just during migratory seasons, as a means of becoming acquainted and connecting with nature. The film was photographed by Israel's major nature photographers in K4 quality, including plot, actors, music and topnotch professional editing.

### B. "In Constant Motion"

This 18-minute scientific, humoristic film, presents a broad overview of the geology, geography, history and biology of the Hula Valley with an educational message focusing on nature conservation and sustainability, as a trip through time. The film is in K4 quality, with the first-rate professional actors, plot, scenery and music.





## The Gallery

### **The Conference Hall**

The 283-square meter conference hall will be used for conferences, meetings, study and lectures. It can be used as a single room for 100 people (2 classes or a group of two buses), or as two halls, each accommodating 50 people. The hall will have seating, flooring, an acoustic ceiling, lighting, counters, tables and a gallery for a permanent exhibit.



- The photographs/visualizations are for illustration purposes only.
- The information contained herein is not legally binding