

Jerusalem is the largest metropolis in Israel, home to 856,700 people, all of whom can enjoy the city's open spaces, forests and parks, preserved by KKL-JNF for the health of the environment and the city's burgeoning population.

KKL-JNF has been a partner in the development of the city, its institutions and parks, even before the establishment of the state of Israel. The forests in Jerusalem and its surrounding hills were planted by KKL-JNF, which continues to preserve and maintain them. The forests and

parks serve the leisure and recreation needs of the growing metropolis and are open 24/7, free of charge.

In the last decade, KKL-JNF has implemented various projects for the city's benefit, most notably Jerusalem Park, which offers a variety of activities for people of all ages. The park is close to residences, connects neighborhoods and creates a continuous, green, inviting expanse for leisure, recreation, walking and cycling.

KKL-JNF Celebrates
The 50th Anniversary of
Jerusalem's Reunification
1967-2017

THE KKL-JNF – JERUSALEM CONNECTION



"Ten measures of
beauty
descended to the world,
nine were taken by
Jerusalem"

Talmud, Kiddushin 49b

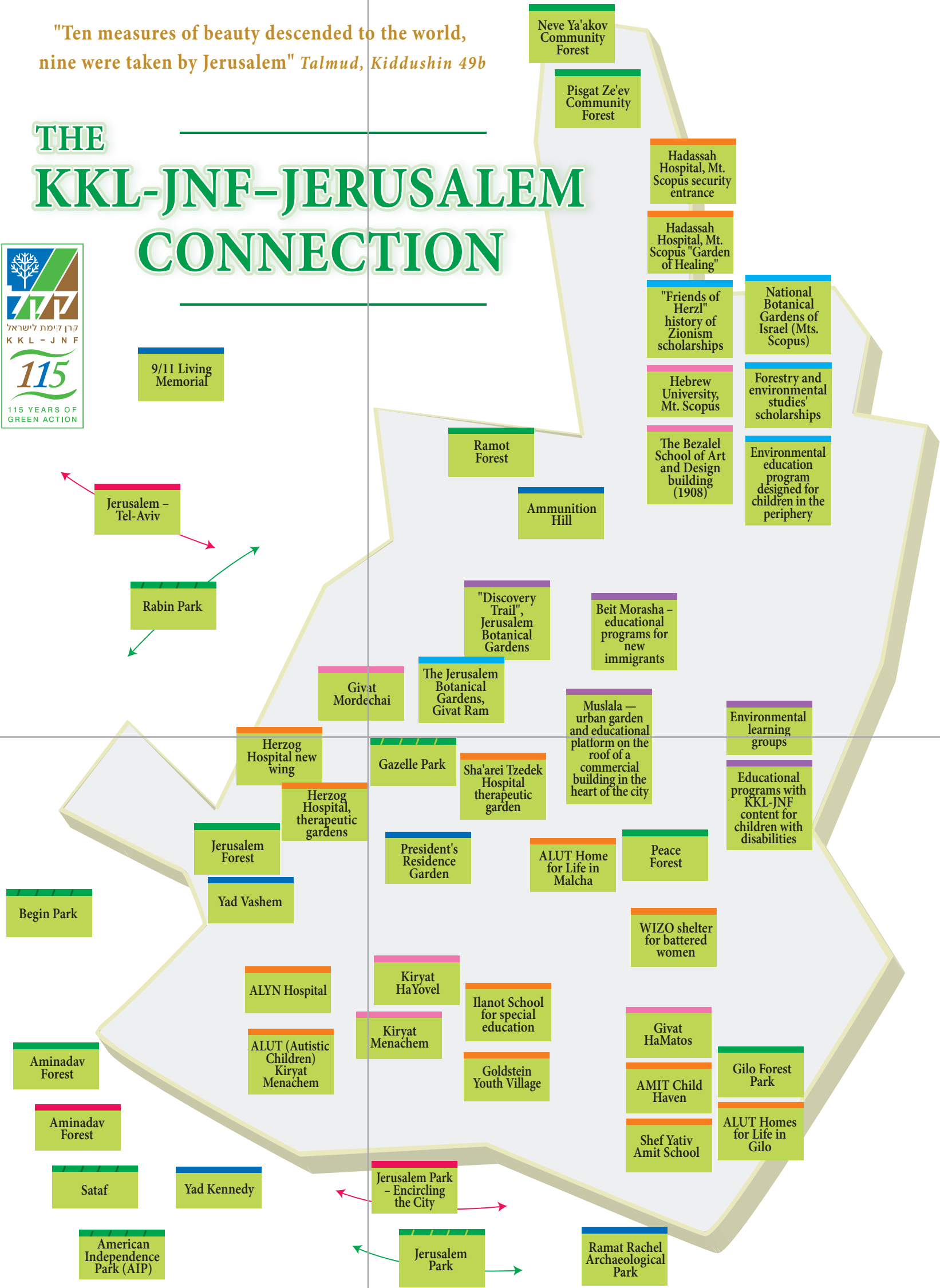


Various projects in Jerusalem made possible with the help of KKL-JNF Friends throughout the world

"Ten measures of beauty descended to the world,
nine were taken by Jerusalem" *Talmud, Kiddushin 49b*



THE KKL-JNF-JERUSALEM CONNECTION



Forests	Heritage and Historical Sites
Public Parks	Landscape Development for medical and therapeutic facilities; schools and residences for children and young adults with special needs and at-risk-youth
Forest Parks in the Judean Hills	Cycling Trails
Hebrew University	Community Development
Informal Education	

